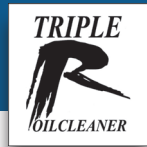
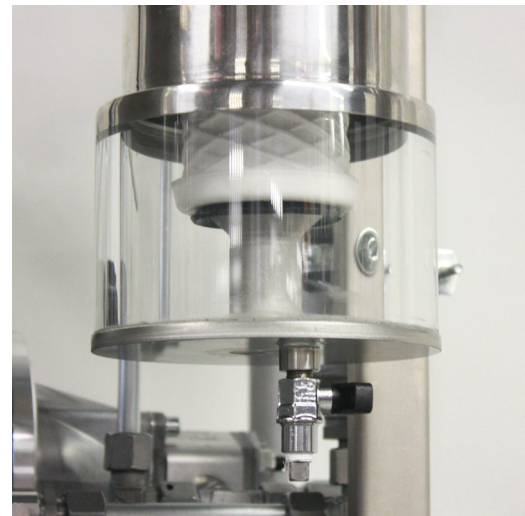


# Water Separator with pre-heater



- *For continuous water separation.*
- *Oil-water-separation process is immediately visible.*
- **Engineered to remove Water + Solid particles!**



## WS-WD with preheater

### Features:

- Very compact Water Separator fitted with a preheater and built into a frame for easy handling.
- Separates the water from oil based fluids and allows draining the water easily and quickly.
- **2 in 1 : water separation and oil filtration.**
- Based on coalescent technology, agglomerates water molecules into droplets, which then drop to the bottom of the fluid.
- Built around a very compact power pack, the WSWD-filter connects to the oil reservoir.
- Low running cost, easy installation & maintenance.
- The pre-heater allows for a better water separation.

### Environmental protection:

- Triple R filters effectively clean the oil and stabilize the oil condition. The result is a significant increase of the oil life and a significant reduction of oil consumption.

### Benefits:

- Avoids imminent oil changes, allows immediate extension of the oil usage and oil life.
- Avoids creation of Rust.
- Improves productivity and machine reliability. Assures longer life of all hydraulic components and prevents breakdowns to the hydraulic equipment.
- Saves significantly on maintenance and oil change related labor cost, and production loss.
- Extends oil life up to up to 50.000 hrs.
- Very important reduction of waste oil and oil disposal expenses.

### Typical applications:

- Marine applications.
- All systems fitted with a leaking oil cooler.
- Perfect for cleaning Diesel fuel.

## Technical specifications

Model	WS-WD
Article nr.	TR-16000
Flow rate	1,60 l/m
Motor	230Vx1 or 400Vx3, 50Hz
Power	0,12 kW (230V)
Element type	1 x WG100 and 1 x WS10 filter element
Max pressure	pressure relief is set at 6 bar
Pump Inlet connection	M16x1,5 (10L); suction line hose 3/8" DN
Filter housing outlet connection	1/2"; return line hose 3/8" DN
Weight kg	45,0 kg
Dimension mm	454 x 608 x 615

## Remarks:

The water separation efficiency depends on various conditions like the oil type and brand type, the oil temperature, the water content (%), and the presence of the water in the oil (free water or emulsified water). Typically this system performs best with an oil viscosity of >46 cSt.

## Parts and working principle:

In the 1st stage WG100 housing solid contaminants are removed as well as it makes water particles aggregate together. In the 2nd stage WS-housing water agglomerate to bigger drops. These drops then separate from the oil by gravity. The lower part of WS housing has a Plexiglas retainer, and allows observing the water separation. The water can then be removed by using the drain valve.

